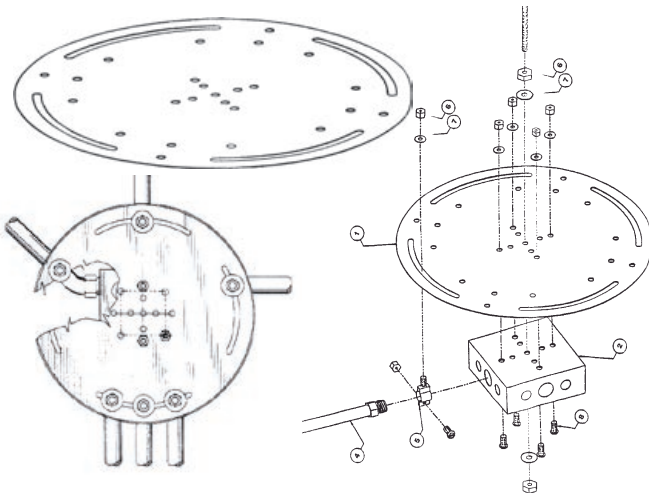




BC-95 Box & Conduit Bracket

- Is 11³/₄ inches in diameter and is fabricated from 20 gauge galvanized steel
- UL Listed and tested with a pull-force of 180 lbs
- UL Listed and tested with a load of 60 lbs.
- Meets both Federal guidelines and the National Electrical Code for bracing conduit° (with the BC 95, bracing is complete within 4 inches of the box)
- Can brace conduit from any angle — all 360°



FOR SALES & PURCHASE INFORMATION

PROCYON2 NETWORK & ASSOCIATES

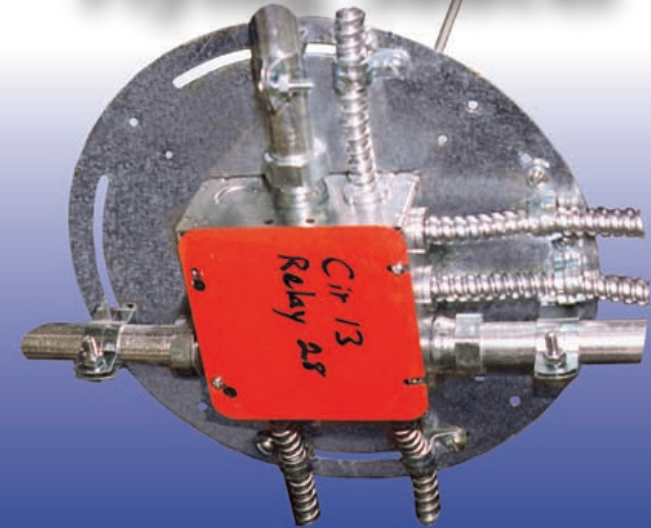
PO Box 7729
Dallas, TX 75209-0729
Office 214-350-1299
www.procyon2.com

Fax 214-902-9069
Toll Free 877-216-0660

877-216-0660



It's NO Flying Saucer!



It's the Labor-saving BC95 Box & Conduit Bracket

The BC95 meets the NEC® requirements for hanging junction boxes and fastening conduit. Other solutions can be too costly to install; testimonials have each installed plate saving from \$20 to \$40 in labor costs*.

Support Box and Conduits with one rod and clamp! Each plate will support multiple conduits within four inches of the box in all directions!

Eliminate the labor expense of supporting conduits using threaded rods, strut or other means and save 30 to 45 minutes per box!

The BC-95 mounting meets requirements for box support outlined in NEC Article 300-11, 331-11, 333-7, 334-10, 345-12, 346-12, 347-8, 348-12, 350-18 and 351-8 (1996 Code Book).

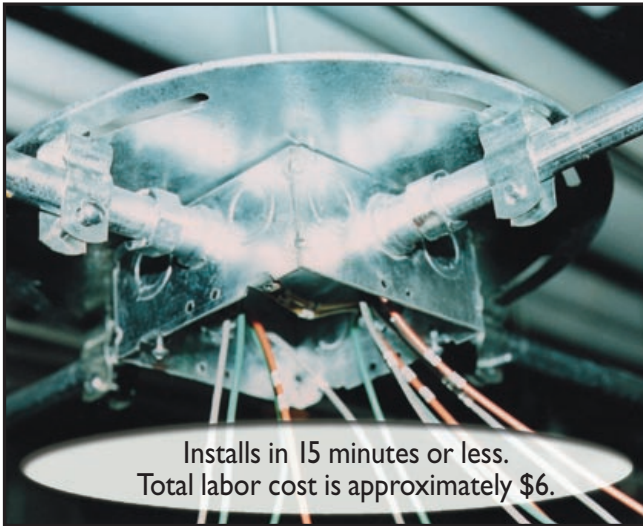


US Patents # 5,698,820, 5,883,332
Canada Patent 2,179,941
Made in the USA

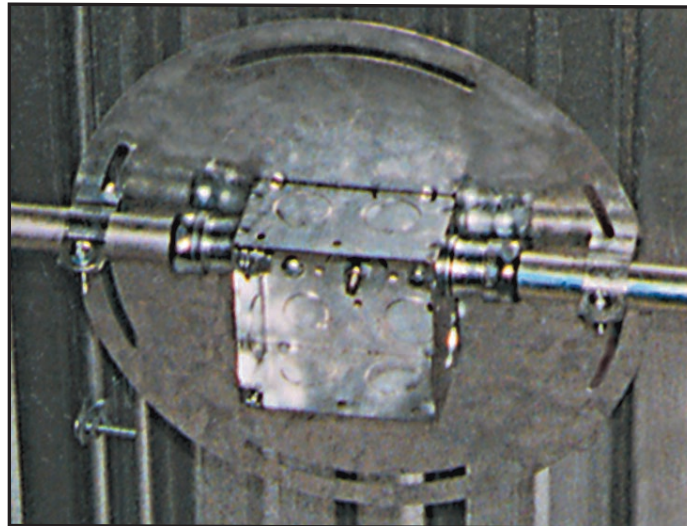
NEC is a registered trademark of the National Fire Protection Association



When Speed and Efficiency Count, Contractors are Experiencing Dramatic Labor Savings Installing the BC95 Box & Conduit Bracket

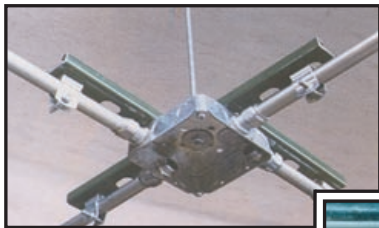


Installs in 15 minutes or less.
Total labor cost is approximately \$6.



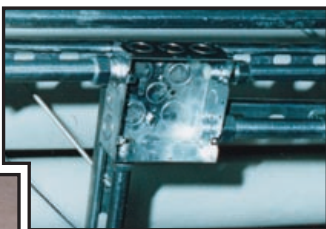
No Competition When Using the BC95 Support Bracket

With sawing, cutting, and the requirement to install up to three or more all-thread rods, competing solutions can take up to 50 minutes to complete, costing over \$20 in labor time (actual time and labor savings may vary). For further savings some contractors are pre-assembling the BC95 by attaching junction boxes and clips to the bracket before it arrives on the job site.



Both of these installations required a hack-saw and assembly

of a brace using uni-strut. This installation required 4 additional "all-thread" rods.

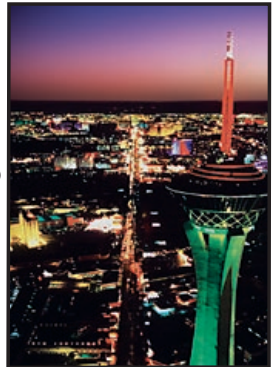


All three installations took more time to install than the BC95.

- **EASY TO INSTALL** No cutting or sawing required to fabricate and assemble the bracing method. Only required to drill once — in the ceiling to install the all-thread rod.
- **FLEXIBLE** Facilitates conduit installation from all angles – 360°, and supports most major brands of boxes and fasteners.
- **QUICK** Installs in 15 minutes or less.
- **SAVES LABOR COSTS** Labor costs are reduced more than 50% compared to other solutions. Per unit savings equate to \$20 or more (actual savings may vary)
- **UNIVERSAL** Adaptable to the major brands of junction boxes, fasteners and clips.
- **STRONG** The design of the BC 95 mounting bracket makes it self-reinforcing as more conduits are attached.
- **UL LISTED** Rating of 180 lbs pull-force and a 60 lbs load force rating. Product code is 27PF.
- **PATENTS** Parsec Products, Inc. owns all patents.

OFFICE TOWERS, HOTELS & CASINOS

- Bank of America Tower
– San Francisco, CA
- The Stratosphere Hotel & Casino
The Bellagio
– Las Vegas NV
- The Horseshoe Casino & The Hollywood Casino
– Bosier City / Shreveport, LA.



MILITARY INSTALLATIONS



Barksdale Air Force Base
– Shreveport LA



The Pentagon
– Washington D.C.

WAREHOUSES, SCHOOLS & HOSPITALS

Several Educational Facilities/ Schools
– TX, LA, NV

Warehouse & Distribution Centers
– TX, LA, OK, AZ, CA, NV



Thousands have been installed in hospitals. Some report installing as many as 20 BC95 brackets in each operating room.

Veterans Admin Hospital
– Dallas TX, Phoenix, AZ

UT Southwest Medical Center • Parkland Memorial Hospital
– Dallas TX

Presbyterian Hospital • Broward Medical Center
– Plano TX – Ft. Lauderdale FL

AIRPORT TERMINALS

McCarran International Airport • DFW International Airport
– Las Vegas NV – Dallas-Ft. Worth TX

Miami International Airport
– Miami FL